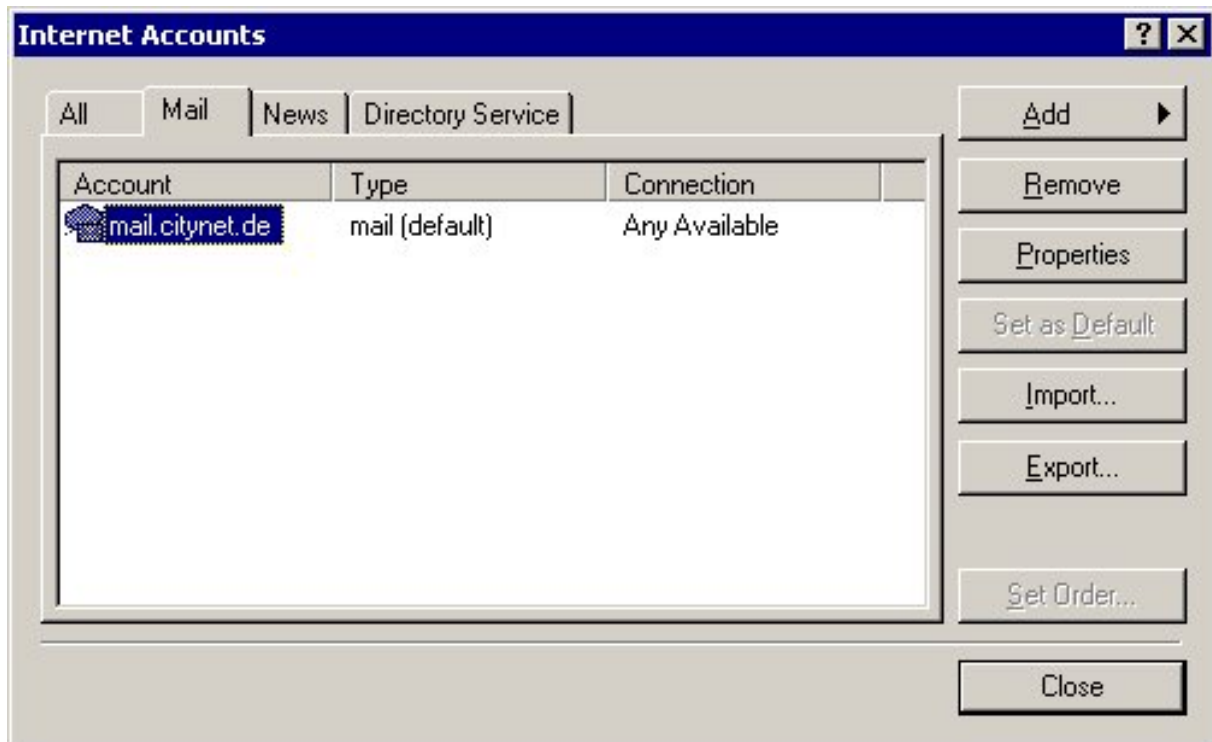


Please follow the steps in this document to modify an existing count in “Outlook Express”. The configuration of your operating system or your internet connection is not part of this document.

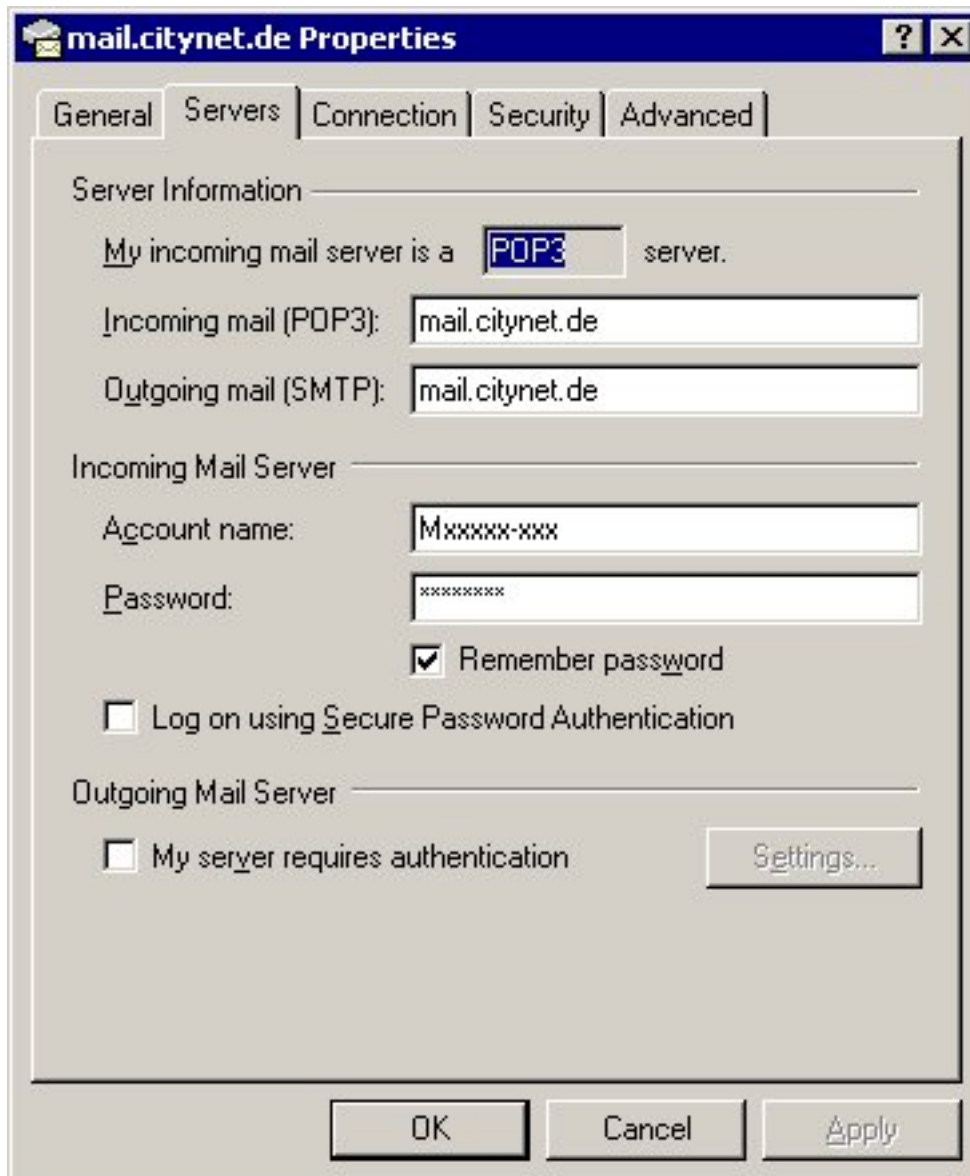
The required information (e-mail address, account and password) can be found on your data sheet.

Menu: **Tools -> Accounts**



Hit the tab „**Mail**” and highlight your account. Select **Properties** to do the further steps.

Select the tab “**Server**”, your existing settings should look like this and are subject to change.



The screenshot shows the 'mail.citynet.de Properties' dialog box with the 'Servers' tab selected. The dialog has a title bar with a question mark and a close button. Below the title bar are five tabs: 'General', 'Servers', 'Connection', 'Security', and 'Advanced'. The 'Servers' tab is active, showing the following settings:

- Server Information**
 - My incoming mail server is a **POP3** server.
 - Incoming mail (POP3): mail.citynet.de
 - Outgoing mail (SMTP): mail.citynet.de
- Incoming Mail Server**
 - Account name: Mxxxxx-xxx
 - Password: xxxxxxxx
 - Remember password
 - Log on using Secure Password Authentication
- Outgoing Mail Server**
 - My server requires authentication
 - Settings...

At the bottom of the dialog are three buttons: 'OK', 'Cancel', and 'Apply'.

Please modify your settings according to this graphics.

mail.citynet.de Properties [?] [X]

General Servers Connection Security Advanced

Server Information

My incoming mail server is a **POP3** server.

Incoming mail (POP3): pop3.citynet.de

Outgoing mail (SMTP): smtpout.citynet.de

Incoming Mail Server

Account name: Mxxxxx-xxx

Password: xxxxxxxx

Remember password

Log on using Secure Password Authentication

Outgoing Mail Server

My server requires authentication

Settings...

OK Cancel Apply

Please click on “Settings” and check your settings according to the graphics shown below.



Outgoing Mail Server ? X

Logon Information

Use same settings as my incoming mail server

Log on using

Account name:

Password:

Remember password

Log on using Secure Password Authentication

OK Cancel

Congratulations, you're updated successfully an existing email account.

If you have further questions, please feel free to drop us a note to hotline@citynet.de or give us a call at 01803 / 232127.